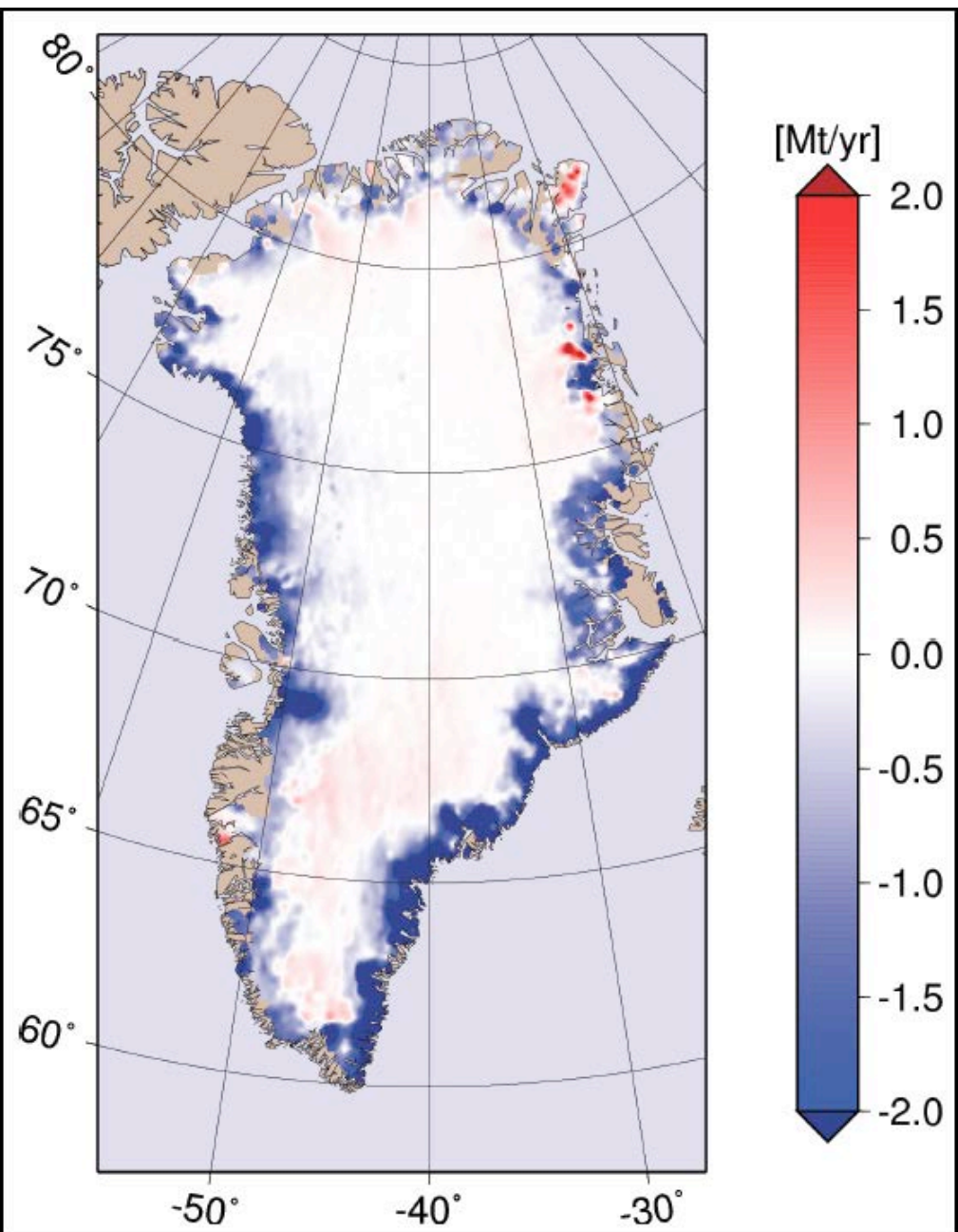


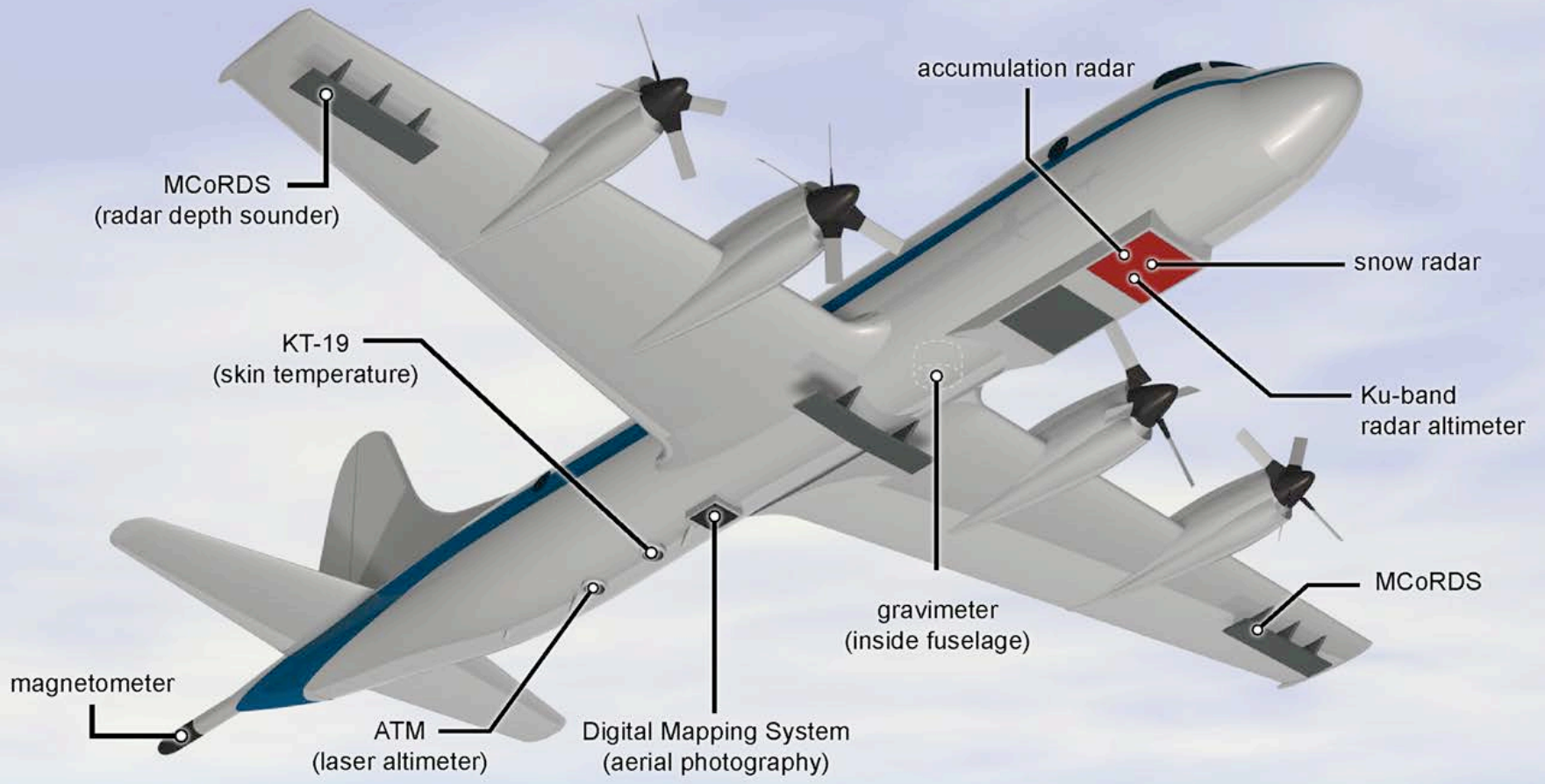
Intro to Applications of Remote Sensing



LIDAR monitoring of ice sheet mass balance

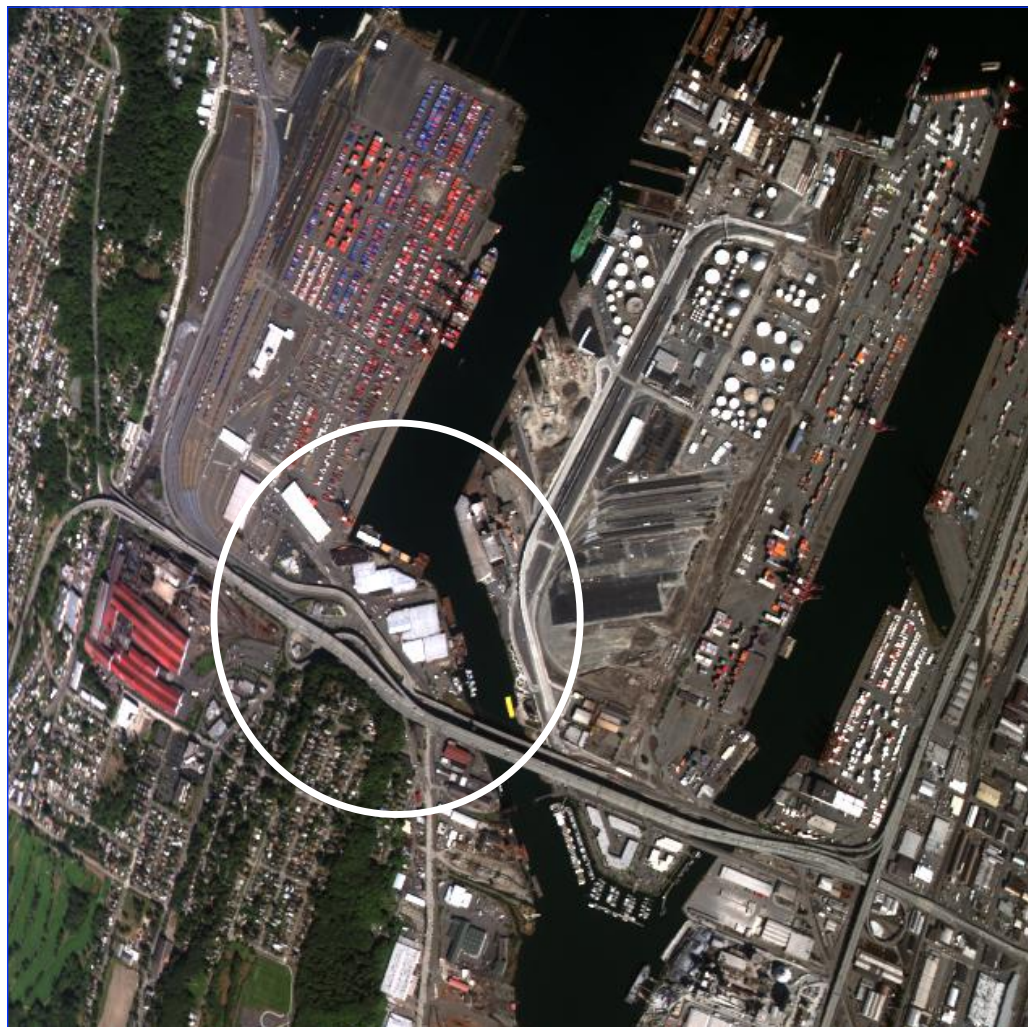
To Understand and Protect Our Home Planet





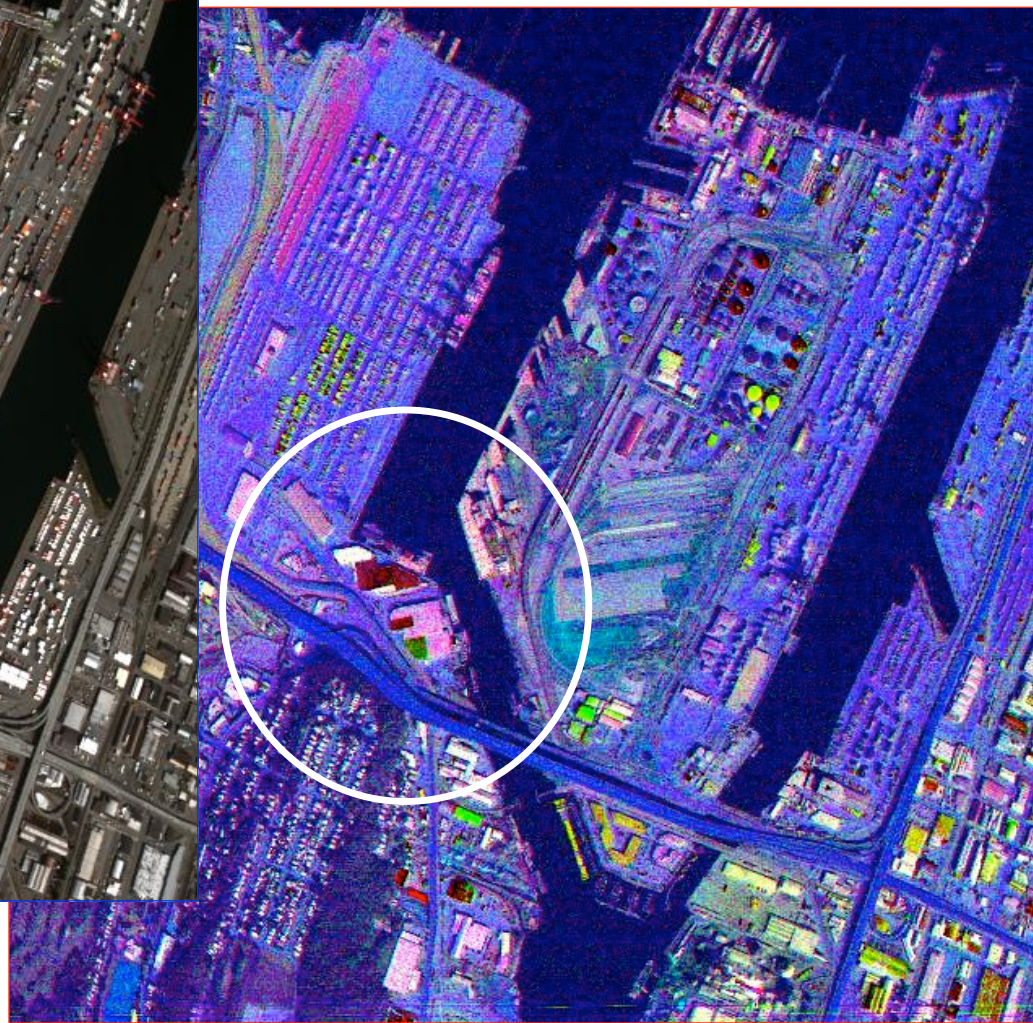
After ICESat ... IceBridge

Different wavelengths reveal different information about scene composition



VISIBLE

THERMAL INFRARED



“True” vs. “False” Color



Pluto in Natural Color



Pluto in Enhanced Color

Two years ago...

Halema'uma'u Vent, Kilauea Volcano, Hawaii



This morning!

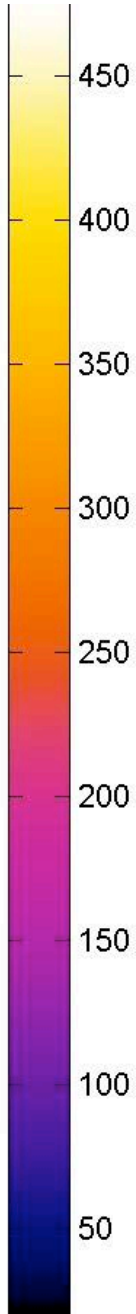
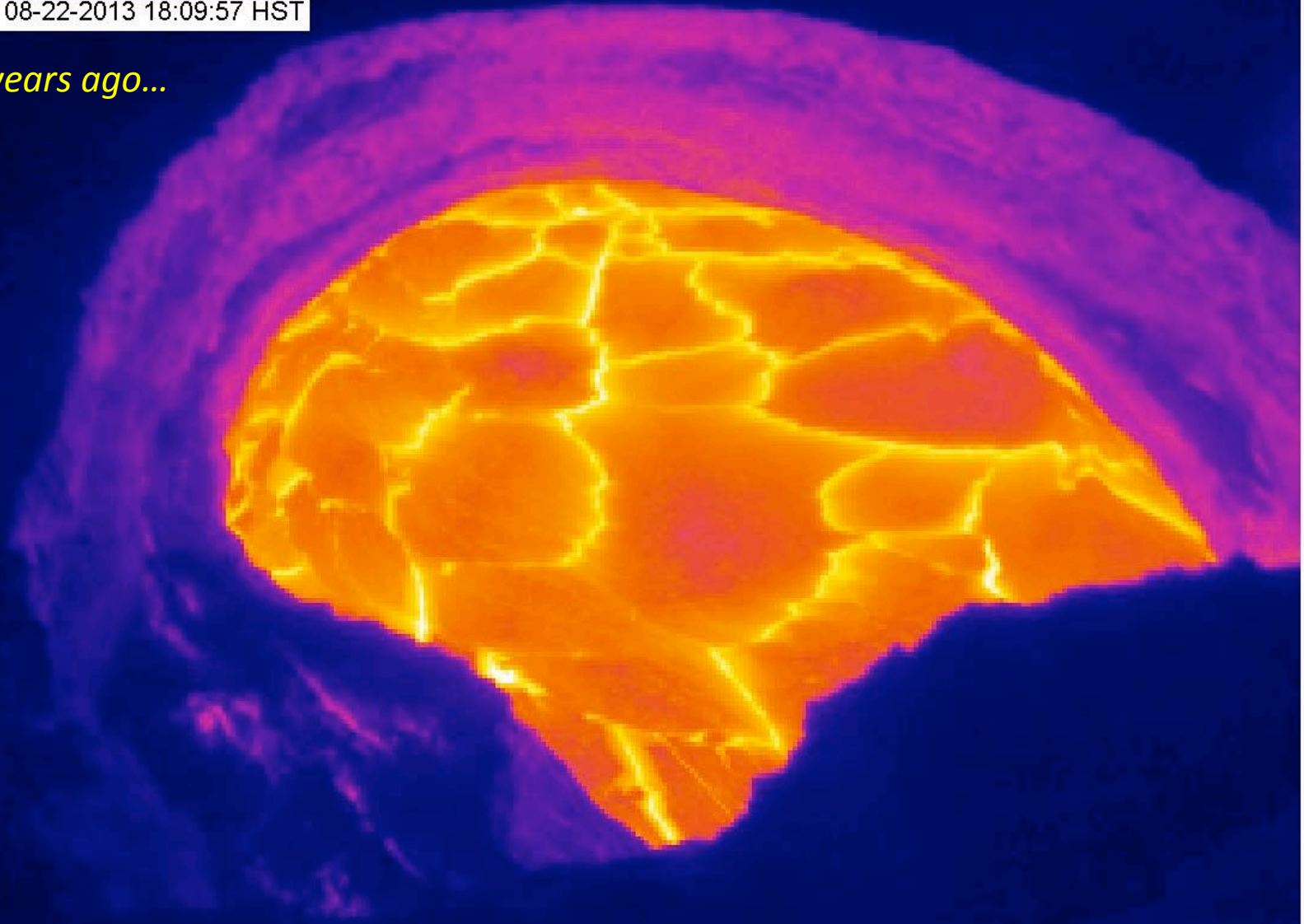
Halema'uma'u Vent, Kilauea Volcano, Hawaii



<http://hvo.wr.usgs.gov/cams/>

HTcam: 08-22-2013 18:09:57 HST

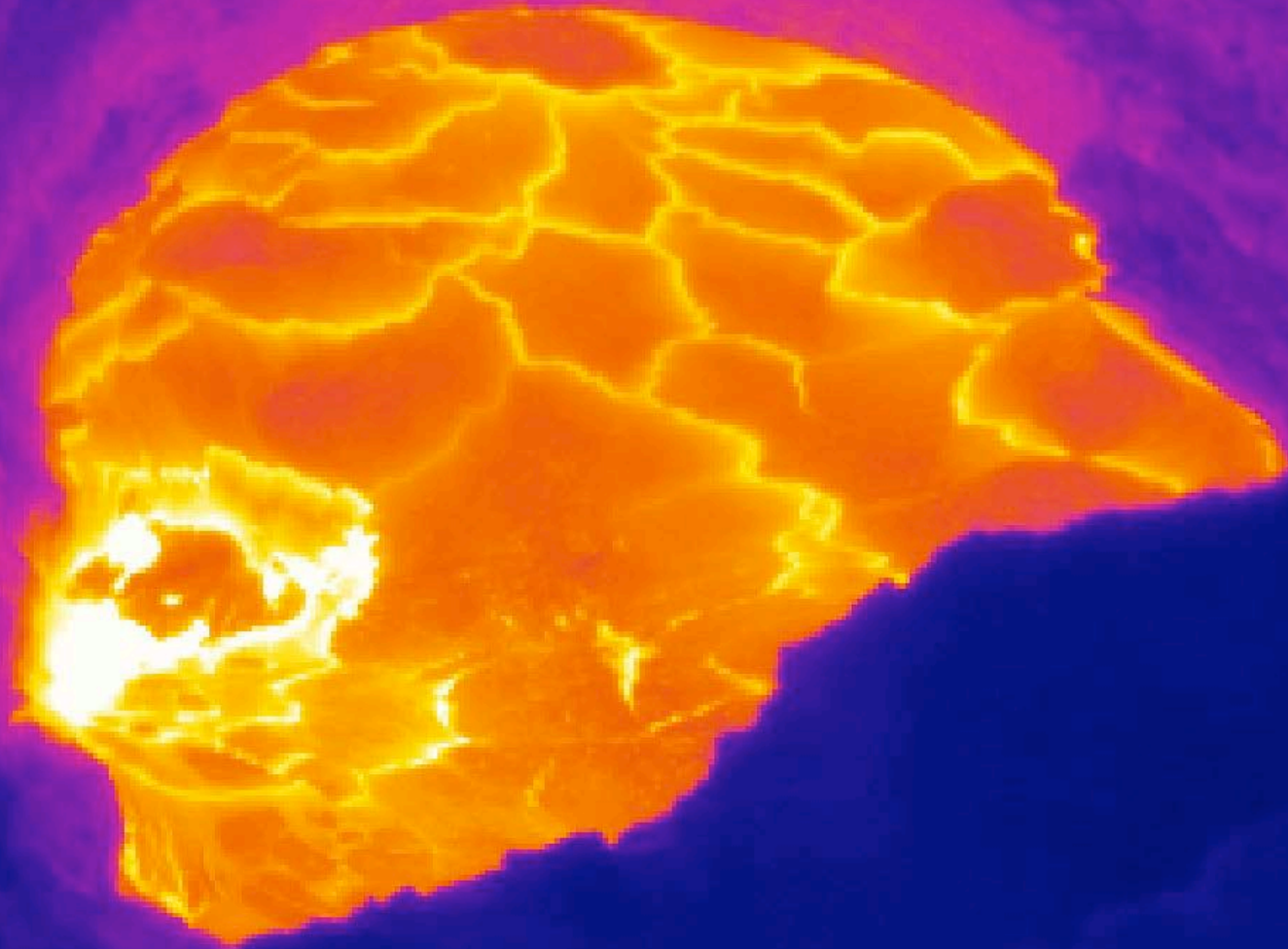
Two years ago...



<http://hvo.wr.usgs.gov/cams/>

HTcam: 08-17-2015 05:59:59 HST

This morning!



Live Panorama of Kīlauea Caldera from HVO [Klcam]
Last Updated 2013-08-22 18:10:48 (HST)



Mapping acid hydrothermal alteration zones

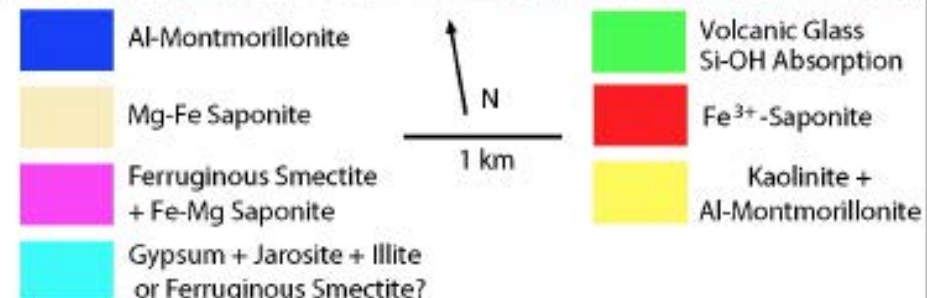
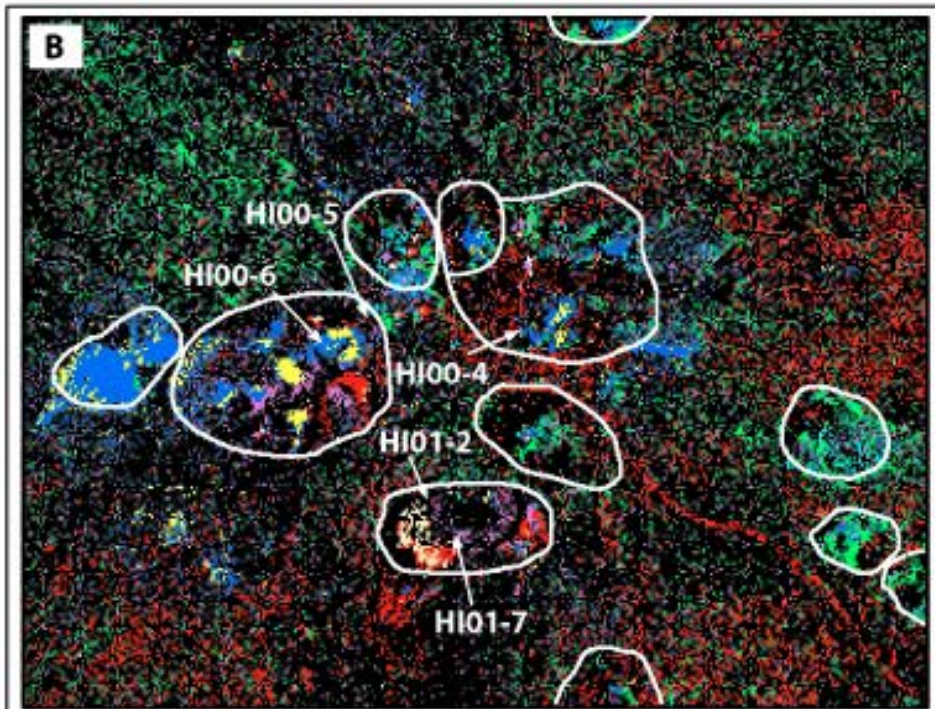
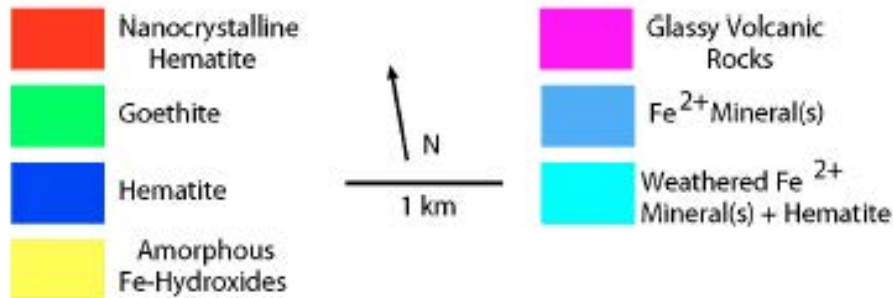
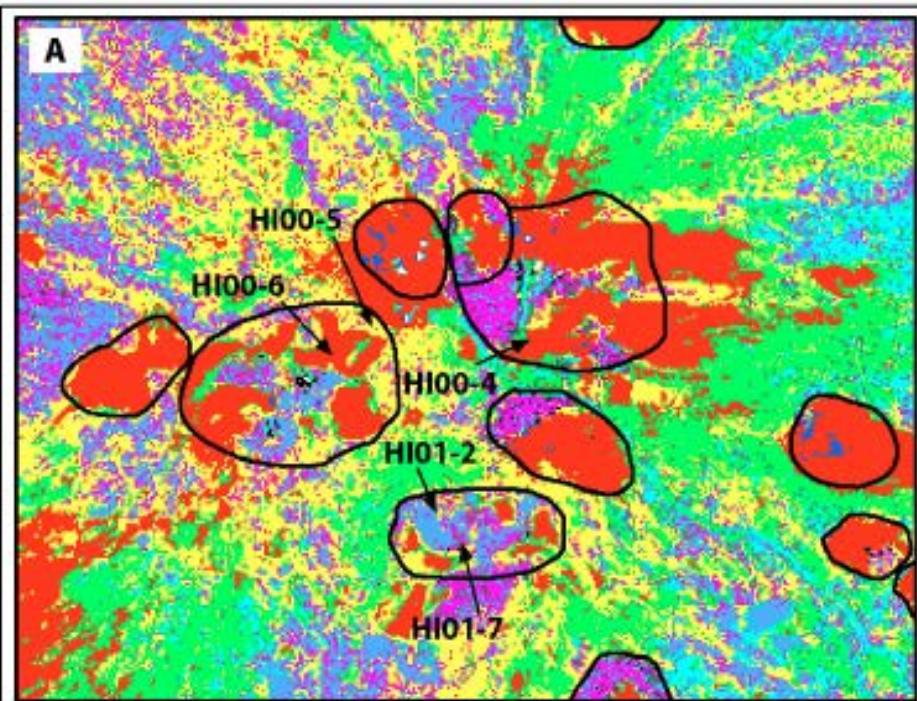
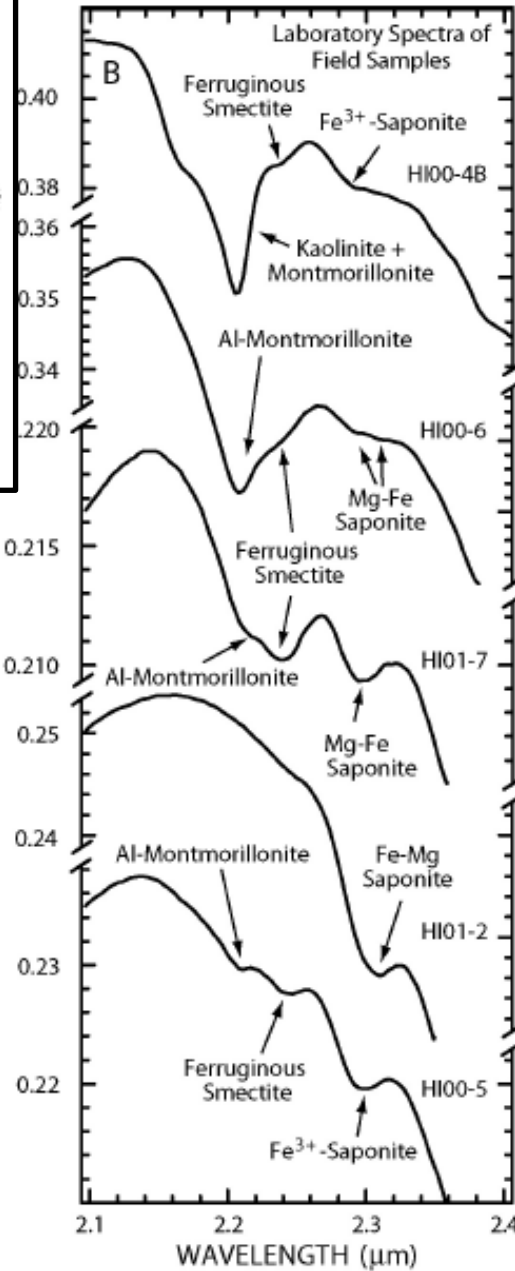
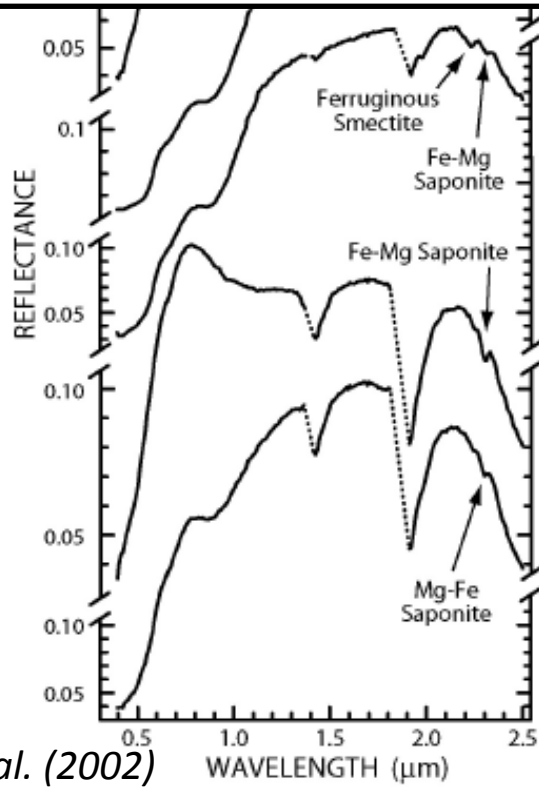
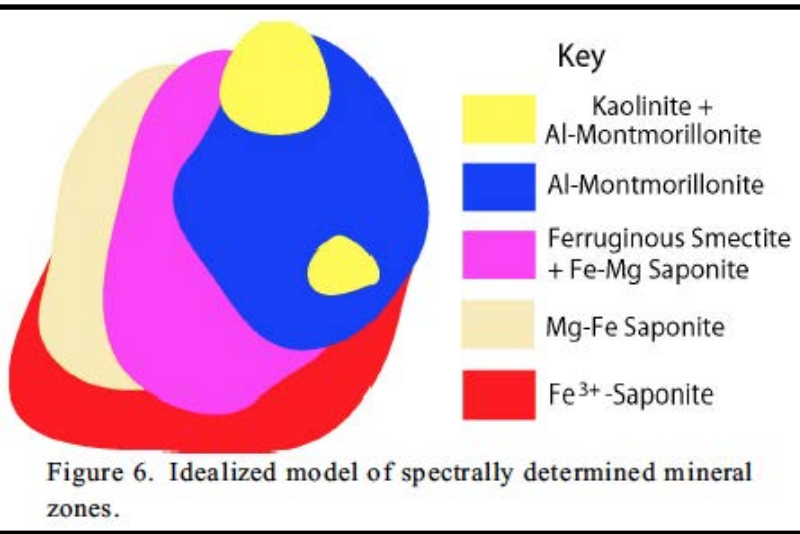


Figure 5. A) Electronic region (0.4 - 1.35 μm) minerals on the summit of Mauna Kea. Cinder cones are outlined in black. Arrows show collection locations of samples. B) Vibrational region (1.35 - 2.5 μm) minerals on the summit of Mauna Kea. Cinder cones are outlined in white.

Mapping acid hydrothermal alteration zones



GT V/NIR spectrometer

